

STEERING COMMITTEE REPORT

September 14, 2012



PROPOSAL **for the** **Creation of a Regional** **Economic Development** **Organization**

Steering Committee Members



Robbie Robinson

Retired Chancery Clerk
Clay County

Member-Growth Alliance

Representing Clay County

Steering Committee Members



Jackie Edwards

Executive Director
Community Counseling Services

President-West Point Clay County
Growth Alliance

Representing Clay County

Steering Committee Members



Gordon Flowers

Attorney

Brunini, Grantham, Grower & Hewes, PLLC

Vice Chairman-LINK

Representing Lowndes County

Steering Committee Members



Jim McAlexander

Businessman/Banker

Chairman-LINK

Representing Lowndes County

Steering Committee Members



Parker Wiseman

Mayor
City of Starkville

Board Member-Greater Starkville Development
Partnership

Representing Oktibbeha County

Steering Committee Members



Jack Wallace

President & Owner
Boardtown Builders, Inc.

President-Oktibbeha County Economic
Development Authority (OCEDA)

Representing Oktibbeha County

Steering Committee Members



Marvel Howard

Carpentry Supervisor
Mississippi State University

President-Oktibbeha County Board of
Supervisors

Representing Oktibbeha County

Steering Committee Legal Counsel



Chris Pace

Jones, Walker, Waechter,
Poitevent, Carrère
& Denègre L.L.P.

Steering Committee Mission



- ❑ **FORMATION**
- ❑ **PURPOSE**
- ❑ **POWERS**
- ❑ **GOVERNANCE AND ADMINISTRATION**
- ❑ **FUNDING**
- ❑ **IMPLEMENTATION TIMELINE**

Steering Committee Mission



FORMATION

Formation of New Organization



Phase I of Formation

- ❑ Temporary agreement between Starkville/Oktibbeha County/Greater Starkville Development Partnership and the LINK
- ❑ Similar to existing agreement between the LINK and West Point/Clay County/Growth Alliance
- ❑ Rename and rebrand the LINK as the “Golden Triangle Development LINK”
- ❑ Duration: Two (2) years (October 2012 thru September 2014) to allow for the formation of a new regional economic development organization

Phase II of Formation

- ❑ Form new authority, **Golden Triangle Regional Development Authority (GTRDA)**, through local and private legislation introduced during the 2014 regular session of the Mississippi Legislature
- ❑ Fund GTRDA as a public-private partnership between:
 - Oktibbeha, Clay and Lowndes Counties, and
 - The privately-funded, Lowndes-Oktibbeha-Clay County Development Foundation (the Foundation)

Steering Committee Mission



PURPOSE

&

POWERS

Purpose & Powers of GTRDA



1. **Speak with one voice on behalf of the region on economic development matters**
2. **Promote and advance economic development throughout the entire Golden Triangle region**
3. **Share economic development resources and costs**
4. **Promote cooperative economic development and coordinated action in the region**
5. **Develop and coordinate economic development strategies across the region**
6. **Identify, discuss, study and focus on regional economic development challenges and opportunities**

Purpose & Powers of GTRDA



7. Coordinate with state and federal agencies regarding economic development programs and incentives
8. Establish and manage regional workforce development initiatives
9. Provide administrative services and assistance to other governmental or quasi-governmental entities, organizations, groups and bodies involved in economic development activities
10. Make recommendations to the counties and municipalities in the region about economic development opportunities
11. Coordinate and collaborate with other organizations (public and private) in any manner intended to promote economic development in the region
12. Tackle all other initiatives authorized by the GTRDA Board for the promotion and advancement of economic development in the region

Steering Committee Mission



GOVERNANCE & ADMINISTRATION

Phase I Governance & Administration



- ❑ **Temporary agreement between Starkville/Oktibbeha County/Greater Starkville Development Partnership and the LINK**
 - Similar to existing agreement between the LINK and West Point/Clay County/Growth Alliance
 - Rename and rebrand the LINK as the “Golden Triangle Development LINK”
 - Duration: Two (2) years (October 2012 thru September 2014) to allow for the formation of the GTRDA

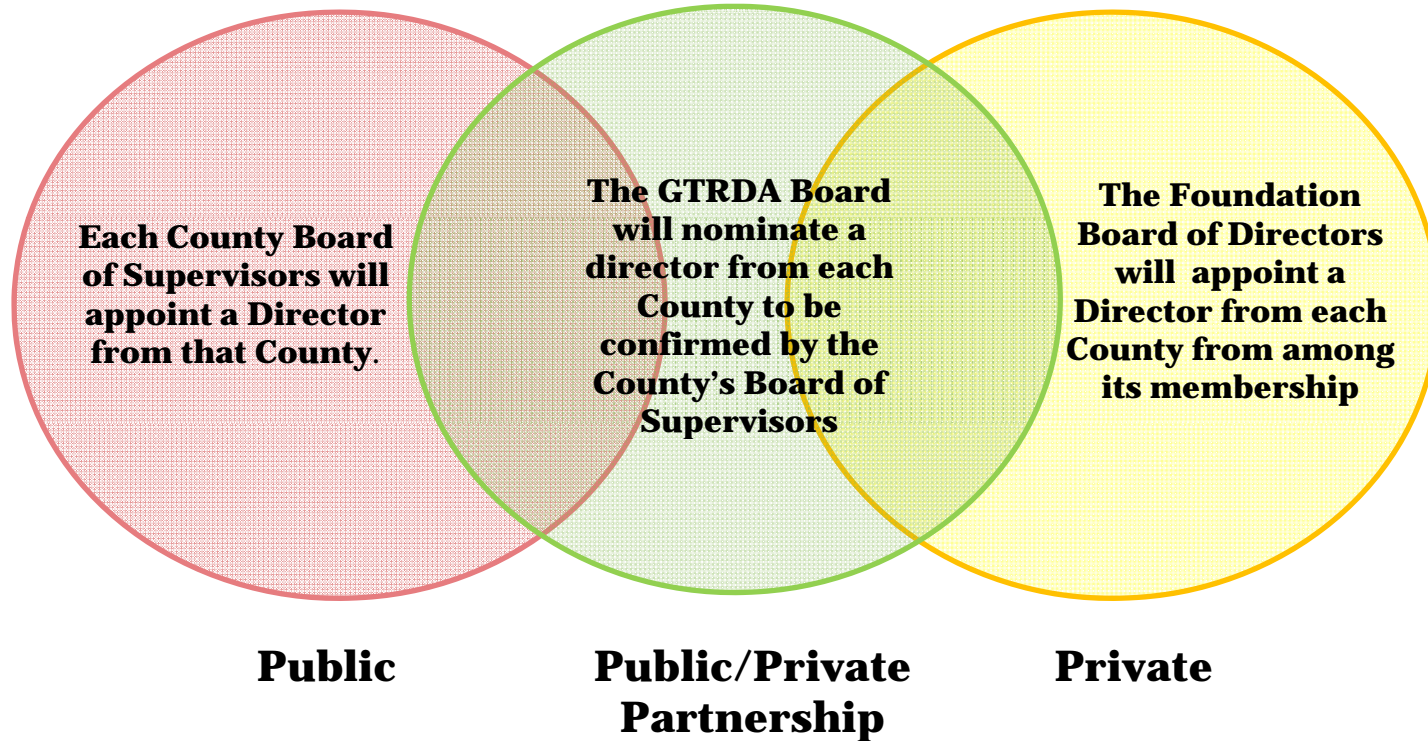
- ❑ **Golden Triangle Development LINK will add from Starkville and Oktibbeha County:**
 - Four (4) new directors to its Board, and
 - Two (2) new members to its Executive Committee from among these new board members

Phase II Governance & Administration

New GTRDA Board of Directors –Nine (9) Members

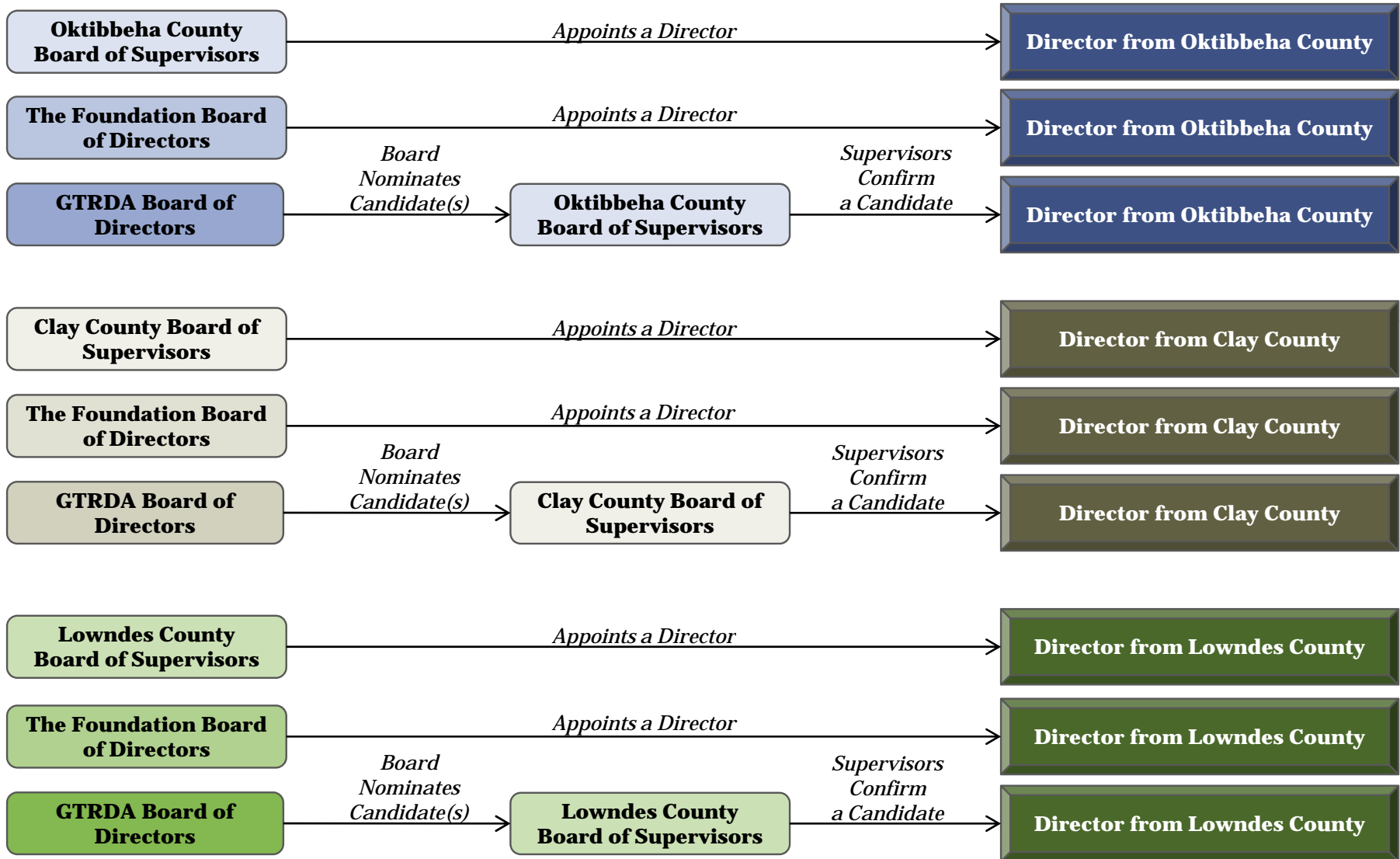


3 Directors + 3 Directors + 3 Directors



To be eligible to serve as a GTRDA Director, a person must be an adult resident of the County he or she is selected to represent. For example, at least three (3) directors must reside in Oktibbeha County (i.e., an Oktibbeha County resident selected and appointed by the Oktibbeha County Board of Supervisors, another Oktibbeha County resident nominated by the GTRDA Board of Directors and confirmed by the Board of Supervisors, and a third Oktibbeha County resident appointed by the Foundation Board of Directors from among its membership .

Three Directors from Each County Appointed as Follows:



GTRDA Governance & Administration

Staggered Terms and Initial Appointments



- **To ensure continuity of leadership (and avoid an entirely new Board at any one time), initial Board terms will be staggered as follows:**

Directors

Initial Term

Subsequent Term

- | | | |
|--|---------|---------|
| ▪ Nominated by the GTRDA Board of Directors
and confirmed by the Board of Supervisors | 2 years | 6 years |
| ▪ Appointed by the Board of Supervisors | 4 years | 6 years |
| ▪ Appointed by the Foundation Board of Directors | 6 years | 6 years |

- **Removal and replacement of directors:**

- A director may be removed from his or her position only by the body that appointed such director, and may be replaced only through the same appointment process.
- The GTRDA Board will also have the authority to remove a director for his or her failure to comply with Board participation rules (*e.g.*, failure to attend scheduled meetings, violation of confidentiality, ethics, etc.).
- Any director removed by the GTRDA Board will be replaced by the body that appointed such director.
- **The Board in 2014 shall be a nine (9) member board comprised of:**
 - Three (3) directors shall be appointed by the Board of Supervisors
 - Three (3) directors shall be appointed by the Foundation Board of Directors
 - These initial six (6) directors shall nominate the remaining three (3) directors to be considered and confirmed by the respective Boards of Supervisors

Steering Committee Mission



FUNDING

GTRDA Funding



- ❑ **Estimated Annual Budget of \$2.3M to \$2.5M**
- ❑ **Proposed Funding Plan**
 - **Lowndes, Oktibbeha and Clay Counties will provide 70% of funding**
 - **Privately-funded Foundation will provide remaining 30%**
- ❑ **Public funding portion will be guaranteed by the authority of each participating county to levy up to 2 mills, unless the county can fund its share from existing sources**
- ❑ **Lowndes-Oktibbeha-Clay County Development Foundation will be funded proportionately from the business and industry community in each participating county**

GTRDA Staffing



- The GTRDA is expected to have a staff of 9
 - 1 CEO
 - 3 County-Assigned Economic Developers
Clay-Lowndes-Oktibbeha
 - 1 Public Relations/Governmental Affairs Specialist
 - 4 Associated Clerical and Support Staff
- In addition to the staff, the Board may employ independent consultants for special project deliverables
- *Each Community will continue to staff and operate its Chamber of Commerce/CVB/Main Street and similar groups; these operations will be separate from the GTRDA*

Steering Committee Mission



IMPLEMENTATION TIMELINE