

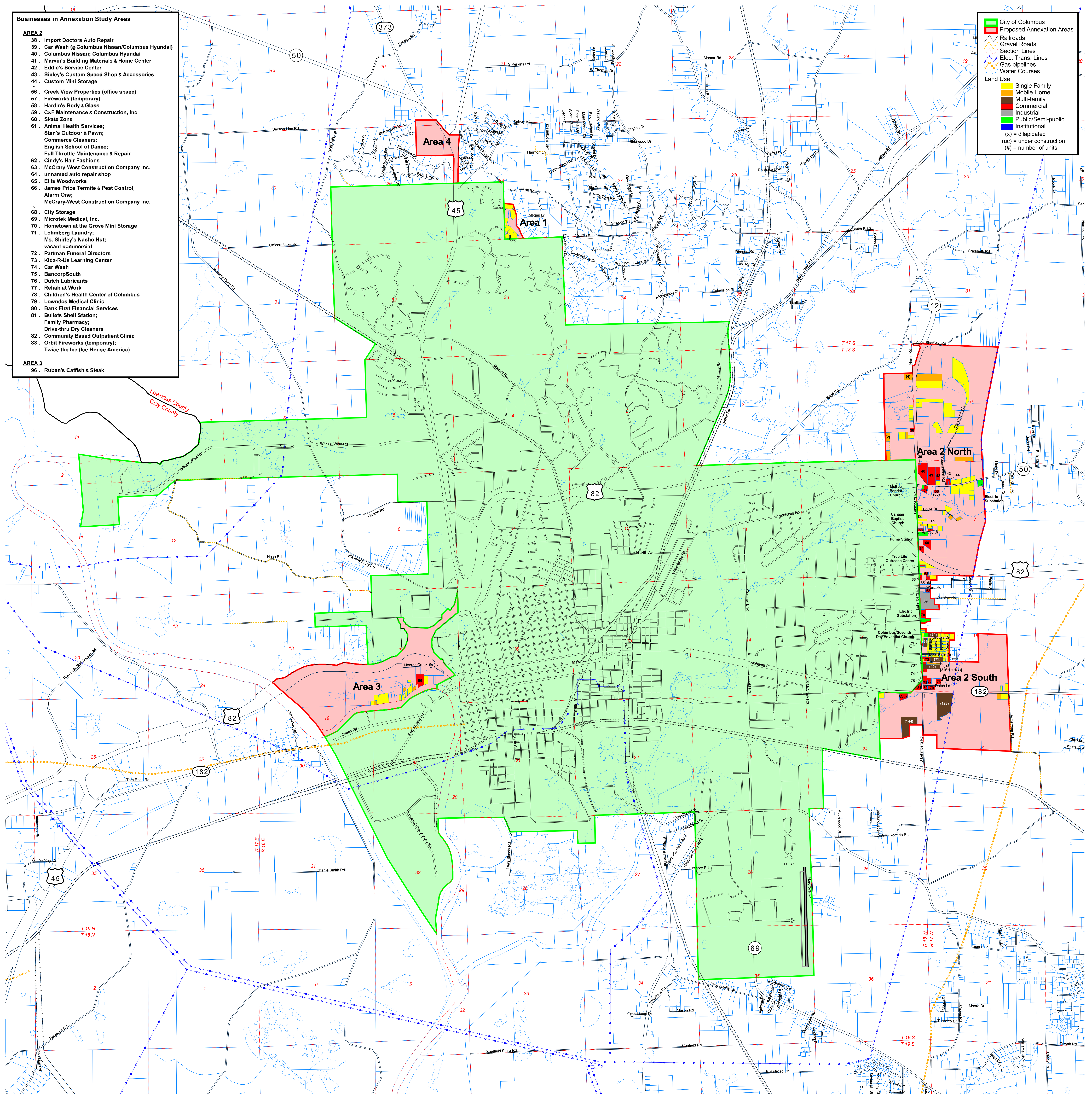
- Businesses in Annexation Study Areas**
- AREA 2**
- 38. Import Doctors Auto Repair
 - 39. Car Wash (a Columbus Nissan/Columbus Hyundai)
 - 40. Columbus Nissan; Columbus Hyundai
 - 41. Marvin's Building Materials & Home Center
 - 42. Eddie's Service Center
 - 43. Sibley's Custom Speed Shop & Accessories
 - 44. Custom Mini Storage
 - 56. Creek View Properties (office space)
 - 57. Fireworks (temporary)
 - 58. Hardin's Body & Glass
 - 59. C&F Maintenance & Construction, Inc.
 - 60. Skate Zone
 - 61. Animal Health Services;
 - Stan's Outdoor & Pawn;
 - Commerce Cleaners;
 - English School of Dance;
 - Full Throttle Maintenance & Repair
 - 62. Cindy's Hair Fashions
 - 63. McCrary-West Construction Company Inc.
 - 64. unnamed auto repair shop
 - 65. Ellis Woodworks
 - 66. James Price Termite & Pest Control;
 - Alarm One;
 - McCrary-West Construction Company Inc.
 - 68. City Storage
 - 69. Microtek Medical, Inc.
 - 70. Hometown at the Grove Mini Storage
 - 71. Lehmborg Laundry;
 - Ms. Shirley's Nacho Hut;
 - vacant commercial
 - 72. Pattman Funeral Directors
 - 73. Kidz-R-Us Learning Center
 - 74. Car Wash
 - 75. BancorpSouth
 - 76. Dutch Lubricants
 - 77. Rehab at Work
 - 78. Children's Health Center of Columbus
 - 79. Lowndes Medical Clinic
 - 80. Bank First Financial Services
 - 81. Bullets Shell Station;
 - Family Pharmacy;
 - Drive-thru Dry Cleaners
 - 82. Community Based Outpatient Clinic
 - 83. Orbit Fireworks (temporary);
 - Twice the Ice (Ice House America)
- AREA 3**
- 96. Ruben's Catfish & Steak

Legend

- City of Columbus
- Proposed Annexation Areas
- Railroads
- Gravel Roads
- Section Lines
- Elec. Trans. Lines
- Gas pipelines
- Water Courses

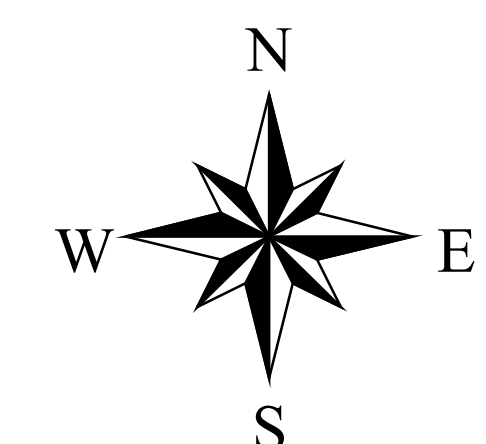
Land Use:

- Single Family
- Mobile Home
- Multi-Family
- Commercial
- Industrial
- Public/Semi-public
- Institutional
- (x) = dilapidated
- (uc) = under construction
- (#) = number of units



BRIDGE & WATSON, INC.
 URBAN AND REGIONAL PLANNING CONSULTANTS AND LAND PLANNERS
 608 McCLARTY ROAD TEL. (662) 234-0958
 POST OFFICE BOX 1482 OXFORD, MS 38655 FAX (662) 234-0997
 MAILBOX@PLANNING-CONSULTANTS.COM

**Land Use Map
 Proposed Annexation Areas
 Columbus, Mississippi**



Data Sources:
 U.S. Census Bureau TIGER Files;
 Lowndes County Tax Assessor;
 City of Columbus; Neel-Schaffer, Inc;
 Bridge & Watson field surveys
 (March 2004; June 2007)

This map is accurate for planning purposes only.

July 1, 2011