



MISSISSIPPI STATE RATING BUREAU

P.O. BOX 5231, JACKSON, MISSISSIPPI 39296-5231
6455 WIRTZ ROAD, FLOWOOD, MISSISSIPPI 39232-7801
TELEPHONE (601) 981-2915 • FAX (601) 981-2924

May 26, 2016

TO ALL INTERESTED AGENTS:

CHANGE IN PUBLIC FIRE PROTECTION
CLASSIFICATION
DISTRICT 5 FIRE DISTRICT
OKTIBBEHA COUNTY, MISSISSIPPI

We are pleased to advise that effective May 17, 2016, the District 5 Fire Protection District, Oktibbeha County, Mississippi changed from EIGHTH CLASS to SEVENTH CLASS.

This public protection classification applies to eligible properties (properties having a needed fire flow of 3,500 gallons per minute or less) located within the legal boundaries of this District, and within five (5) road miles of the responding fire department serving the District. This District meets the requirements for an alternate water supply; therefore, hydrant distance is waived. The split class does not apply.

The fire department for this District DOES PROVIDE PRIMARY RESPONSE to residential fires outside its legal boundaries.

To assist you in determining the properties included in the District 5 Fire District, we are enclosing a map showing the boundaries of the area.

Please note that this District has an alternate water supply, therefore, the standard fire hydrant distance is waived.

When issuing daily reports and endorsements, you must show location of the property covered to be in the District 5 Fire District, Oktibbeha County, Mississippi.

Any insurance contracts covering dwellings located in this District may be endorsed from May 17, 2016, on a pro rata basis to take advantage of the current fire premiums indicated in our Mississippi Dwelling Manual.

(OVER)

TO ALL INTERESTED AGENTS:

May 26, 2016

Comprehensive Dwelling Policies and Homeowners policies also may be endorsed on a pro rata basis to take advantage of applicable rates or premiums.

It will be necessary that we survey or resurvey and publish or republish loss costs for specifically rated mercantile and special class risks affected by this change in classification. If you have a specific mercantile or special risk that you feel is affected by this classification change, please advise our Rating Department so we will be able to schedule a survey by our district representative. Properties that have a needed fire flow greater than 3,500 gallons per minute require an individual property fire protection classification.

A computer printout will be mailed to those who submit a specific request. The effective date of the loss costs will be made retroactive to May 17, 2016.

Following publication of information for class rated properties and rates for specifically rated properties, policies which cover these properties, and which have inception on or after May 17, 2016, may be endorsed from inception to the new rates, while policies having inception prior to May 17, 2016, may be endorsed from May 17, 2016, to expiration on a pro rata basis. In calculating the net rates and premiums for these endorsements, the inception date of the policy or the last endorsed anniversary date determines the rate adjustment, if any, applicable.

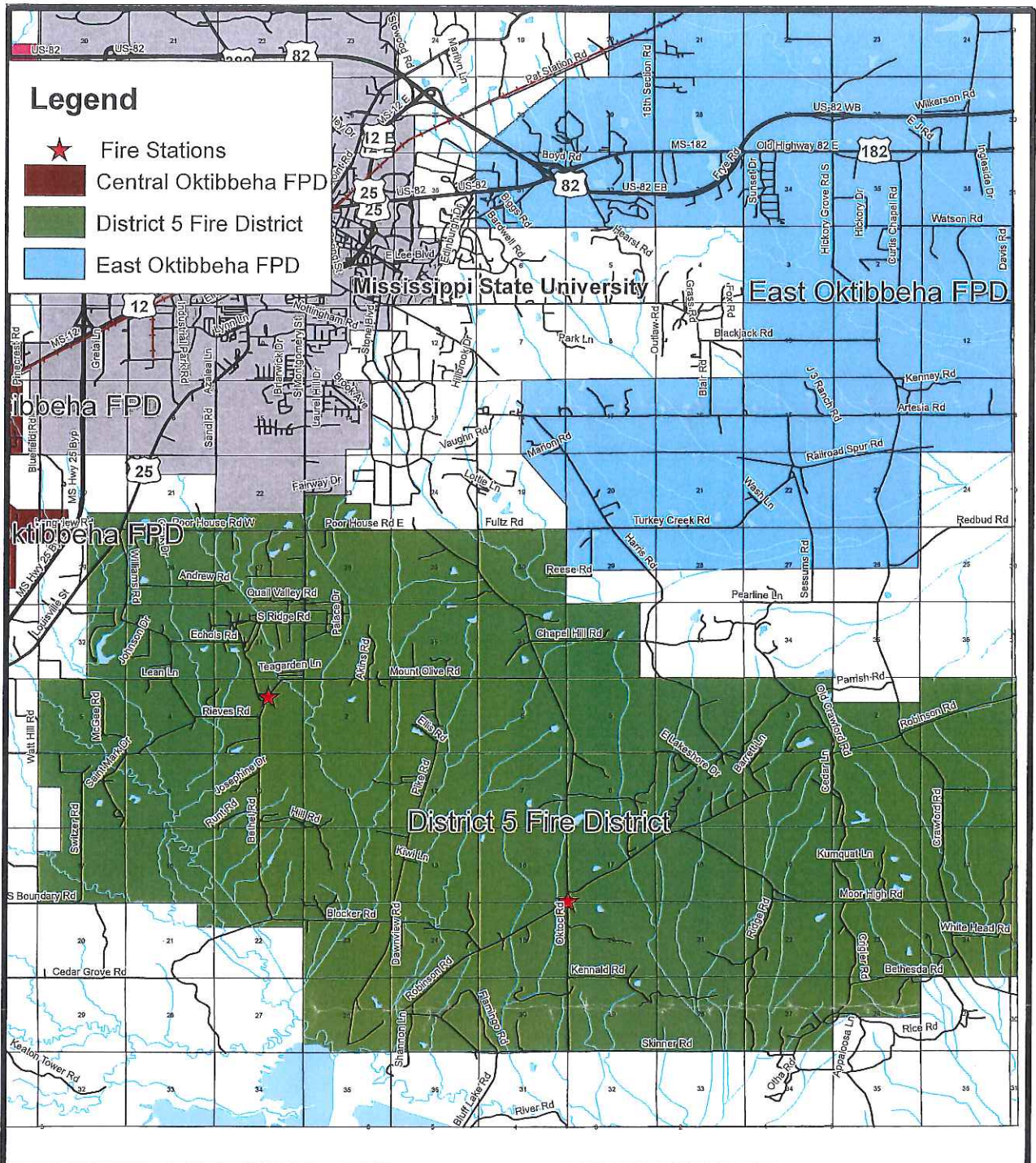
Yours very truly,



Joe S. Shumaker

Manager

jb



DISTRICT 5 FIRE DISTRICT OKTIBBEHA COUNTY

MISSISSIPPI STATE RATING BUREAU
PO BOX 5231
JACKSON, MISSISSIPPI 39296

PUBLISHED MAY 2016

