

LOWNDES COUNTY
School District
CALEDONIA • NEW HOPE • WEST LOWNDES

SAFE & DRUG FREE SCHOOLS

Smarttrack Results

2011 - 2012

Presented by:

Brandy Gardner

Safe & Drug Free Schools Coordinator

Dr. Peggy J. Rogers, Assistant Superintendent

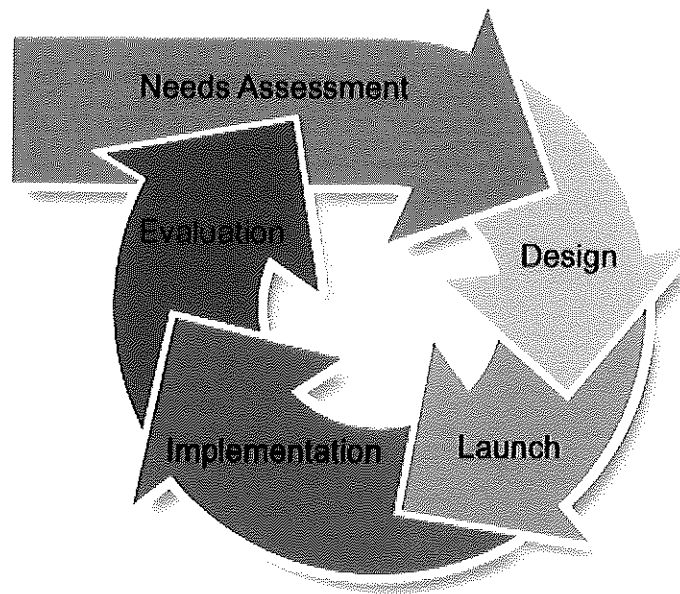
Lynn Wright, Superintendent

385
exit to

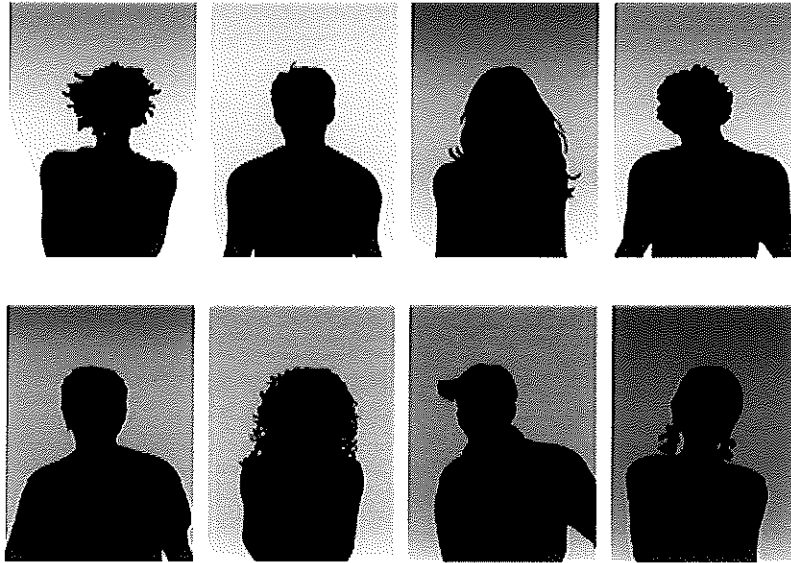
Two hand-drawn icons: a book and a trash can.

What is SmartTrack?

SmartTrack is an internet-based data collection, needs assessment, and evaluation tool for schools on student substance abuse and other risk and protective factors.



Who takes the survey?



SmartTrack is an anonymous survey that is given to students in grades 6-11. Students are **NOT** required to take the survey.

So, what does that mean?

5000 students in the district

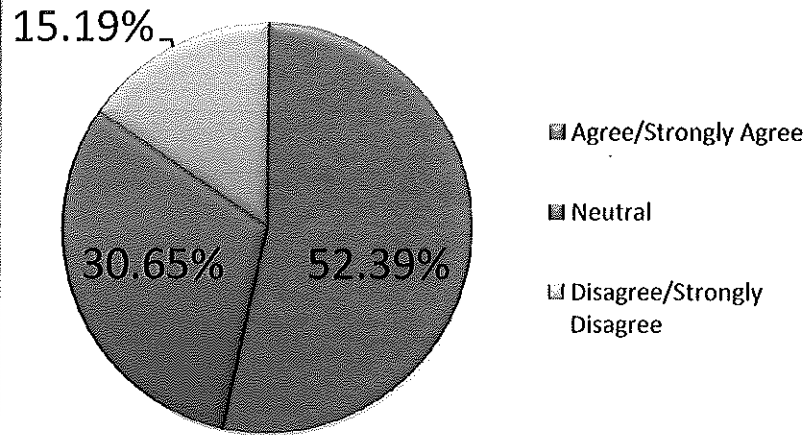
2153 students took the survey this year.

SCHOOL SAFETY

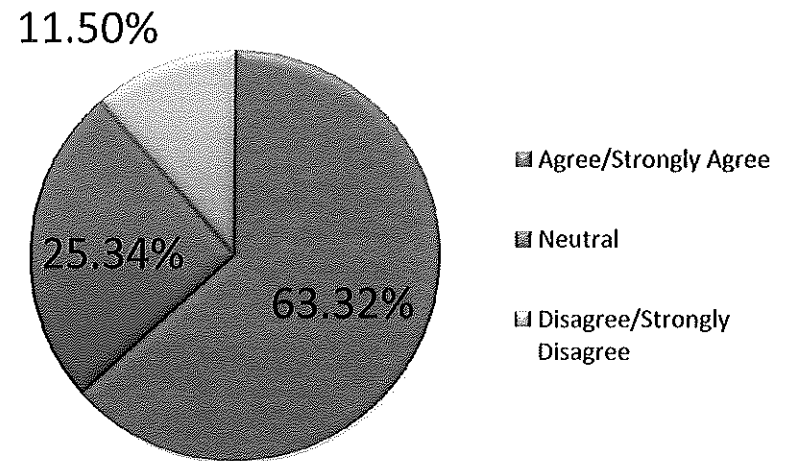
(DISTRICT TOTALS)

I feel safe at this school

2011 – 2012



2010 – 2011





SCHOOL SAFETY

(SCHOOL TOTALS)



DISTRICT = 2153 total surveys
52.39% feel safe at school

Caledonia High School = 395 total surveys
55.44% feel safe at school

③

Caledonia Middle School = 384 total surveys
64.84% feel safe at school

①

New Hope High = 479 total surveys
49.27% feel safe at school

⑤

New Hope Middle = 696 total surveys
44.11% feel safe at school

⑥

West Lowndes High = 101 total surveys
62.38% feel safe at school

②

West Lowndes Middle = 98 total surveys
55.10% feel safe at school

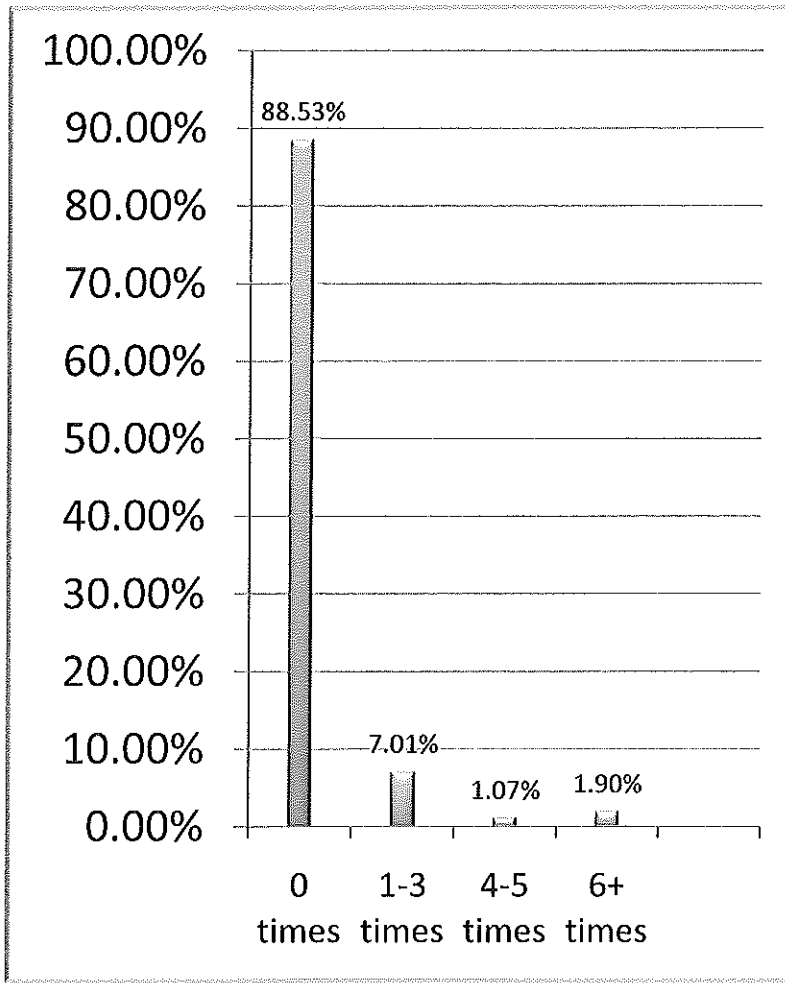
④



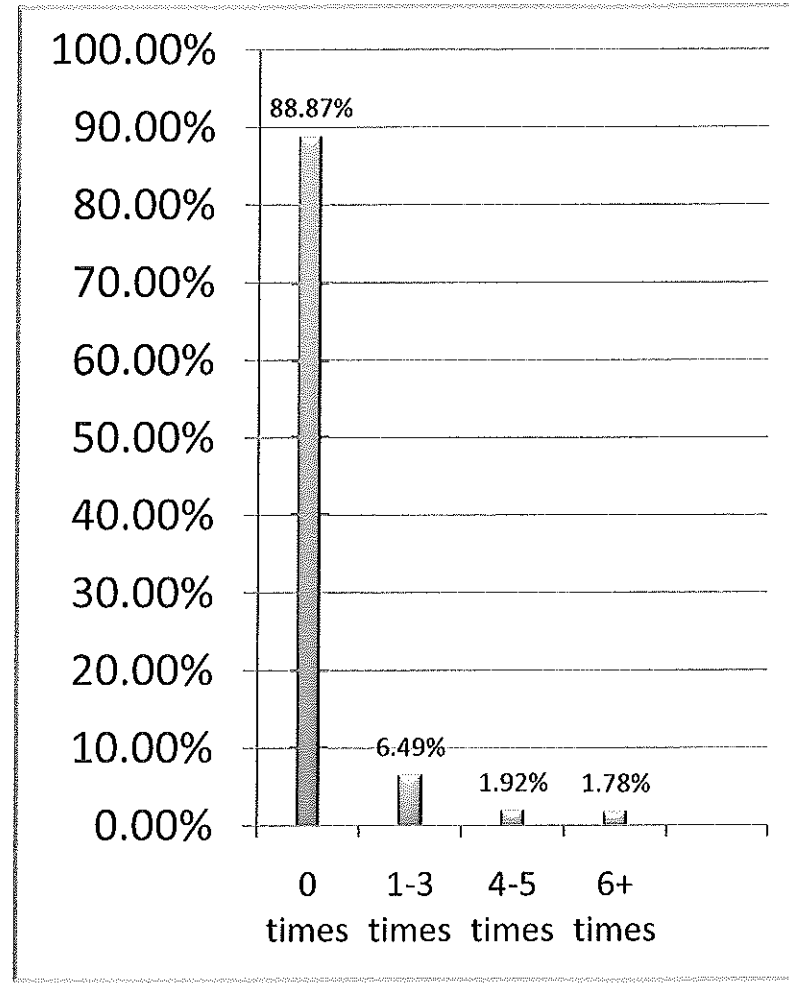
VIOLENCE (DISTRICT TOTALS)

How many times has someone threatened or injured you with a weapon such as a gun, knife, or club on school property?

2011 – 2012



2010 – 2011





VIOLENCE

(SCHOOL TOTALS)

How many times has someone threatened or injured you with a weapon such as a gun, knife, or club on school property?



DISTRICT = 2153 total surveys

88.53% (0) times

Caledonia High School = 395 total surveys

85.82% (0) times

Caledonia Middle School = 384 total surveys

91.93% (0) times

New Hope High = 479 total surveys

84.76% (0) times

New Hope Middle = 696 total surveys

91.66% (0) times

West Lowndes High = 101 total surveys

82.18% (0) times

West Lowndes Middle = 98 total surveys

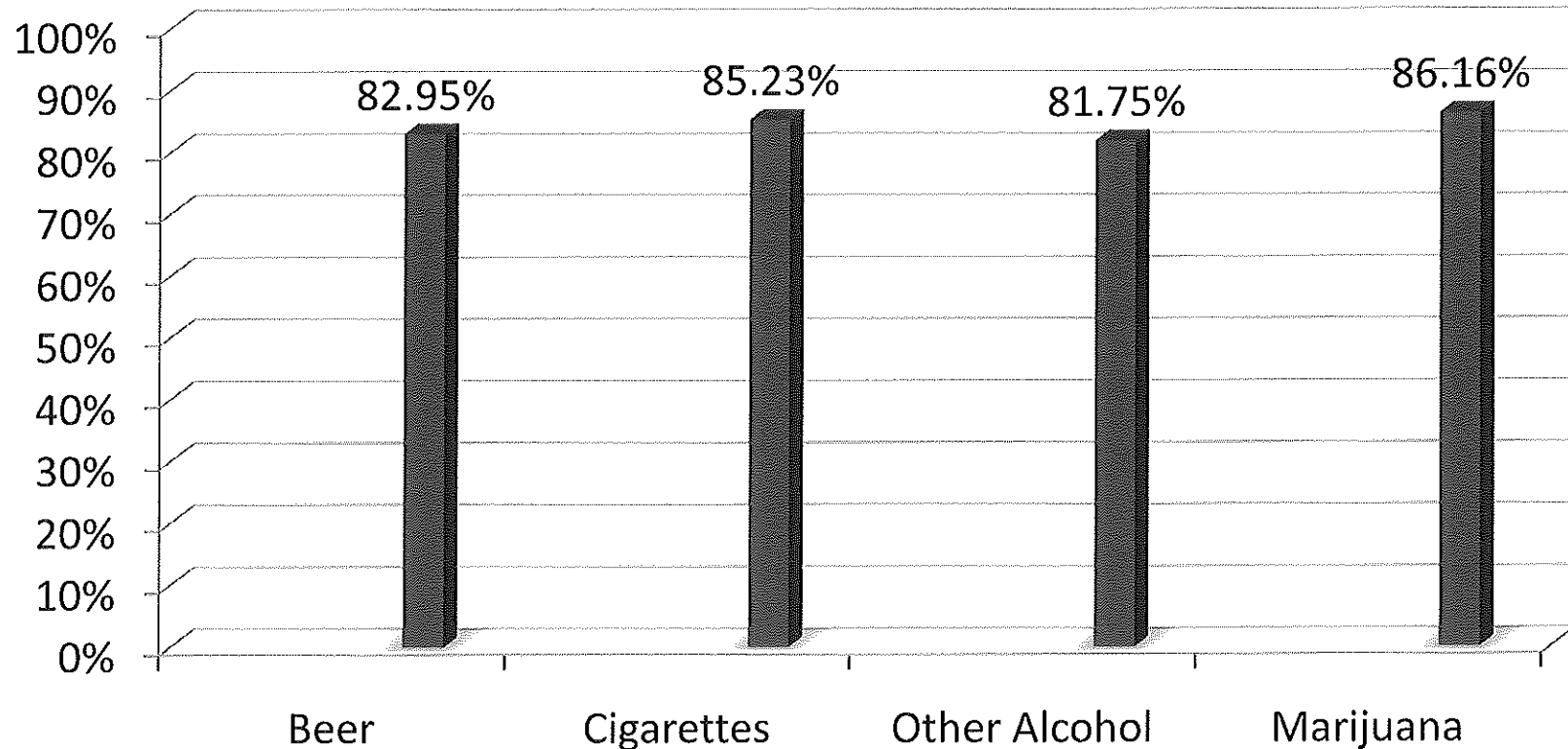
88.78% (0) times



ALCOHOL/TOBACCO/OTHER DRUG USAGE

(DISTRICT TOTALS)

In the past 30 days, I have drunk, smoked or used:
RESPONSE: NEVER TRIED



ALCOHOL/TOBACCO/OTHER DRUG USAGE (SCHOOL TOTALS)

In the past 30 days, I have drunk, smoked or used:

RESPONSE: NEVER TRIED

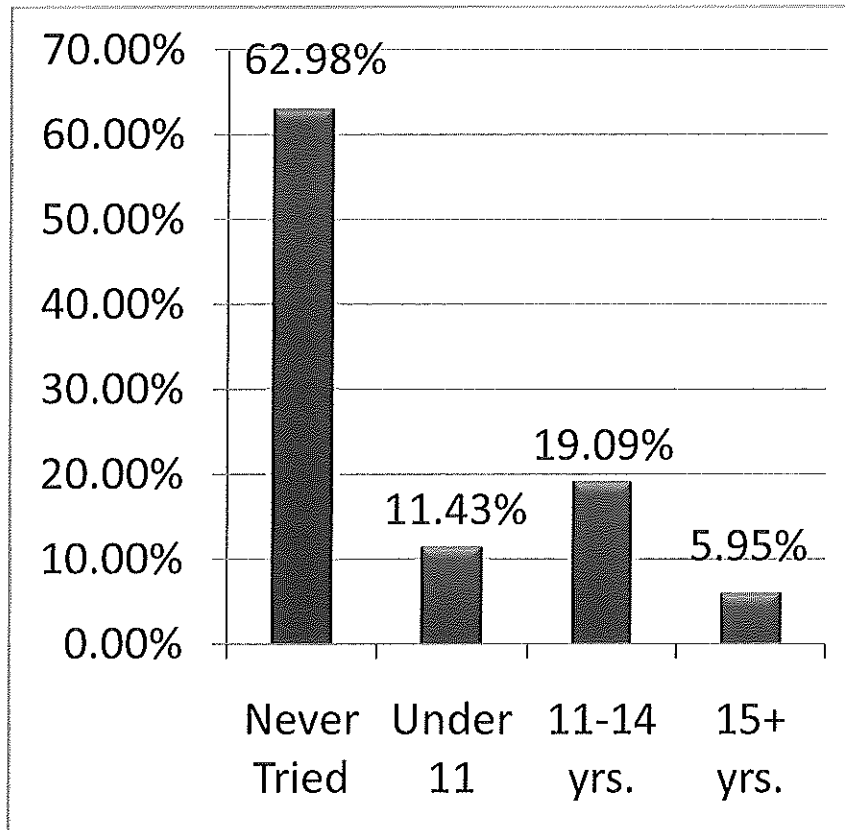
SCHOOL NAME	BEER	CIGARETTES	OTHER ALCOHOL	MARIJUANA
DISTRICT	82.95%	85.23%	81.75%	86.16%
Caledonia High	74.94%	75.70%	72.91%	77.97%
Caledonia Middle	89.06%	90.89%	90.89%	93.75%
New Hope High	75.16%	77.24%	70.15%	78.50%
New Hope Middle	87.93%	91.95%	88.22%	90.95%
West Lowndes High	88.12%	87.13%	83.17%	86.14%
West Lowndes Middle	88.78%	90.82%	90.82%	92.86%

AGE OF ONSET

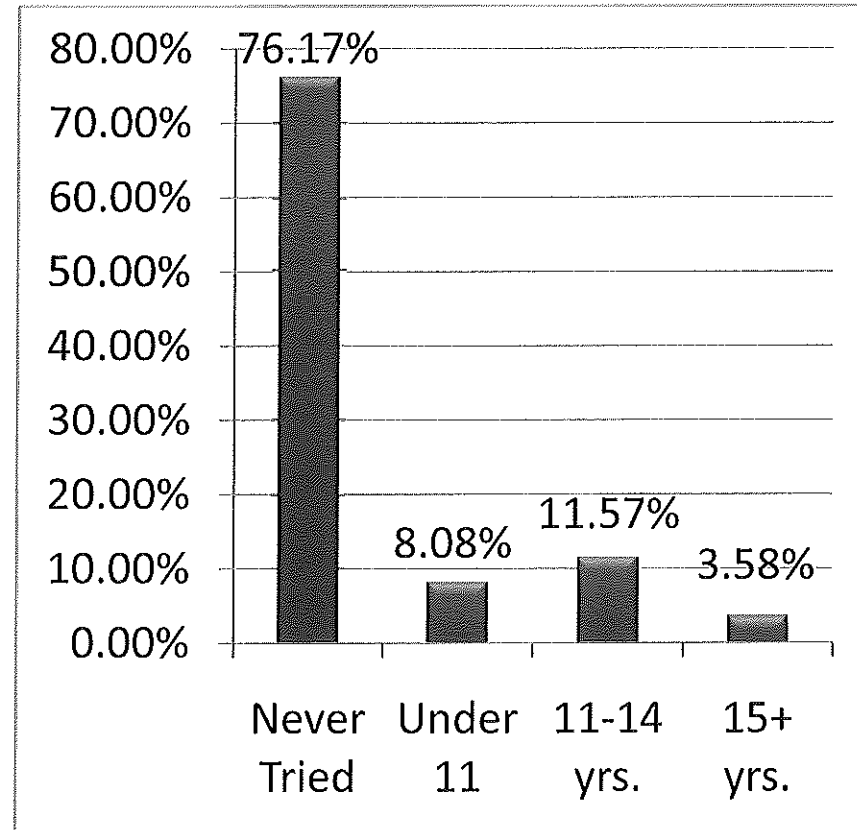
(District Totals)

Research clearly shows that the earlier an individual begins using alcohol, tobacco, and other drugs, the more likely he or she is to develop drug use problems in adolescence.

I was about this old when I first began to drink beer



I was about this old when I first began to smoke cigarettes



AGE OF ONSET

(SCHOOL TOTALS)

I was about this old when I first began to:

DRINK BEER

SCHOOL	NEVER TRIED	UNDER 11	11 – 14 yrs.	15+ Yrs.
LCSD	62.98%	11.43%	19.09%	5.95%
CHS	46.58%	17.47%	25.57%	12.91%
CMS	80.47%	8.59%	7.81%	0
NHH	42.38%	13.78%	29.02%	14.41%
NHM	74.71%	9.48%	14.80%	0
WLH	63.37%	13.86%	17.82%	4.95%
WLM	77.55%	12.24%	10.20%	0

SMOKE CIGARETTES

SCHOOL	NEVER TRIED	UNDER 11	11 – 14 yrs.	15+ Yrs.
LCSD	76.17%	8.08%	11.57%	3.58%
CHS	60.76%	13.16%	16.71%	8.35%
CMS	85.68%	7.03%	7.03%	0%
NHH	64.93%	9.39%	16.70%	8.56%
NHM	85.20%	5.75%	8.05%	0
WLH	79.21%	5.94%	12.87%	1.98%
WLM	88.78%	4.08%	7.14%	0

MSIS STUDENT DISCIPLINE REPORT

The following number of students were suspended/expelled for the following:

2011 – 2012

5000 Students

35 = FIGHTING (.70%)
4 = ASSAULT (.08%)
11 = WEAPON POSSESSION (.22%)
13 = ALCOHOL/DRUG POSSESSION (.26%)
7 = VANDALISM (.14%)
1 = DISORDERLY CONDUCT (.02%)
0 = BOMB THREATS (0%)
2 = GAND RELATED INCIDENT (.04%)

2010 – 2011

5032 Students

42 = FIGHTING (.83%)
9 = ASSAULT (.18%)
10 = WEAPON POSSESSION (.20%)
6 = ALCOHOL/DRUG POSSESSION (.12%)
1 = VANDALISM (.02%)
4 = DISORDERLY CONDUCT (.08%)
2 = BOMB THREATS (.04%)
1 = GAND RELATED INCIDENT (.02%)

PARENTAL INVOLVEMENT



The Lowndes County School District believes that without the help of parents, we will continue to fall short in our goals to have safe schools where we can educate our children.

Each school in the district has a parent coordinator that uses the **PRACTICAL PARENT EDUCATION CURRICULUM** to conduct workshops throughout the year on issues such as: bullying, gangs, drug abuse and violence.

UNSAFE SCHOOL CHOICE OPTION POLICY

This policy states that each state receiving funds under this Act shall establish and implement a statewide policy requiring that a student attending a “persistently dangerous public school, as determined by the State, or who becomes a victim of a violent criminal offense, be allowed to attend a safe school within the local education agency.

**ALL SCHOOLS IN THE LOWNDES COUNTY
SCHOOL DISTRICT ARE SAFE SCHOOLS!**

