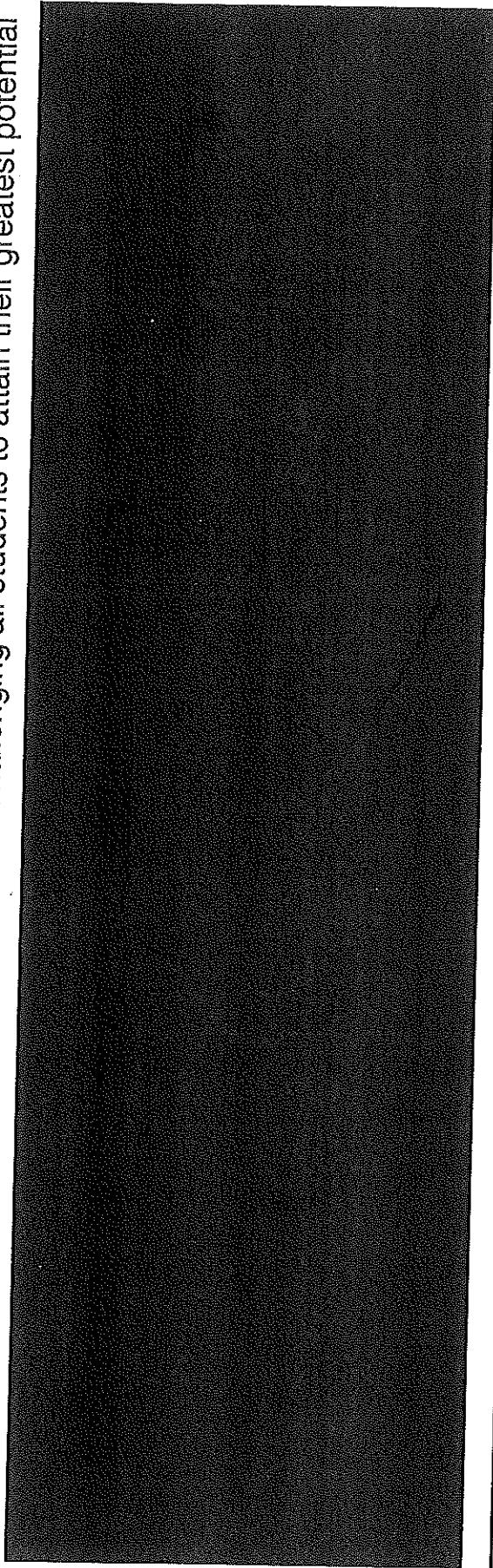

Lowndes County School District Master Plan Update

November 08, 2013

Challenging all students to attain their greatest potential



Lowndes County School District • November 2013
JBHM Architects
104 South 3rd Street Columbus MS 39701



District Master Plan – Phase I

Caledonia Campus:

- 1 Build new Elementary School
- 2 Expand Middle School &/or 9th Grade into existing facilities
- 3 Provide new structures and selective demolition in compliance with Master Plan

New Hope Campus:

- 1 Pursue shelter funding for Upper Elementary and Middle School P.E. Facility

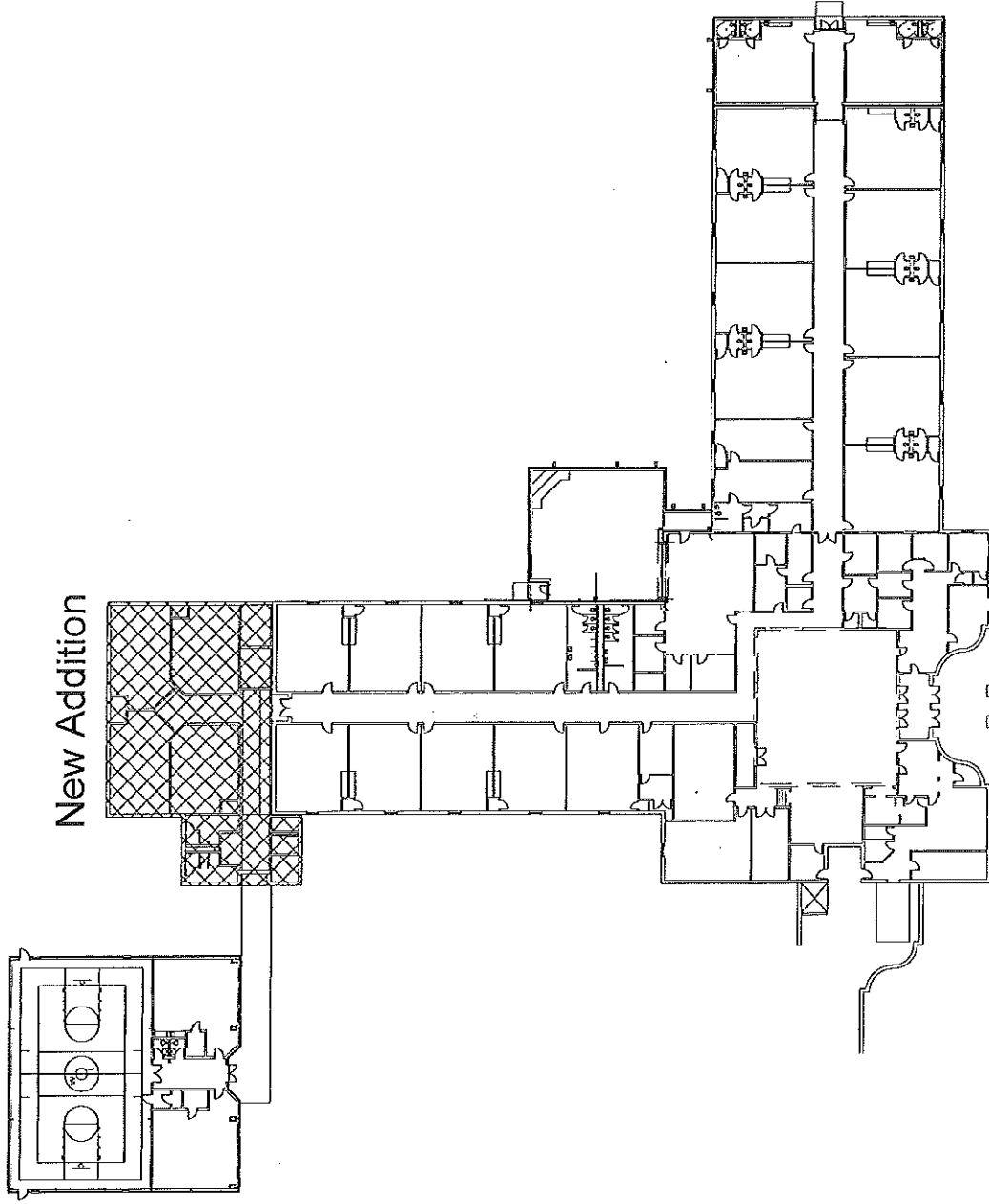
West Lowndes Campus:

- 1 Middle School
 - Move 6th Grade to Elementary (K-6)
 - Move 7th / 8th Grades to High School campus
 - ~~▪ Alternative Schools, program expansion and District Storage to Middle School Campus~~

District:

- 1 Pursue property for Centralize Career Technology Center

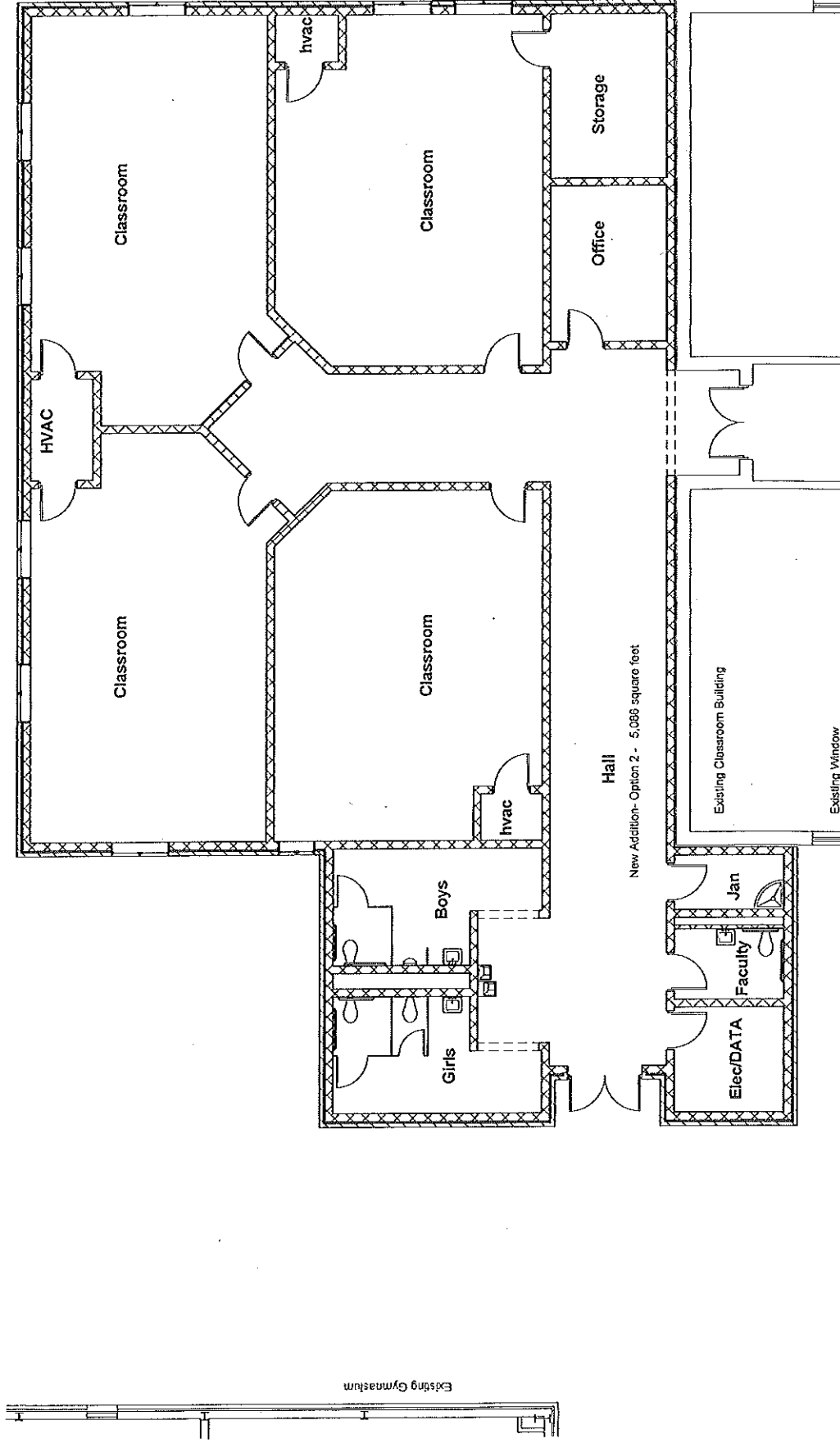
West Lowndes Elementary, Overall



Lowndes County School District • October 2013

JBHM
Architecture

West Lowndes Elementary, Addition



Lowndes County School District - October 2013

JBHM
Architecture

West Lowndes Middle School Transition
Preliminary Schedule

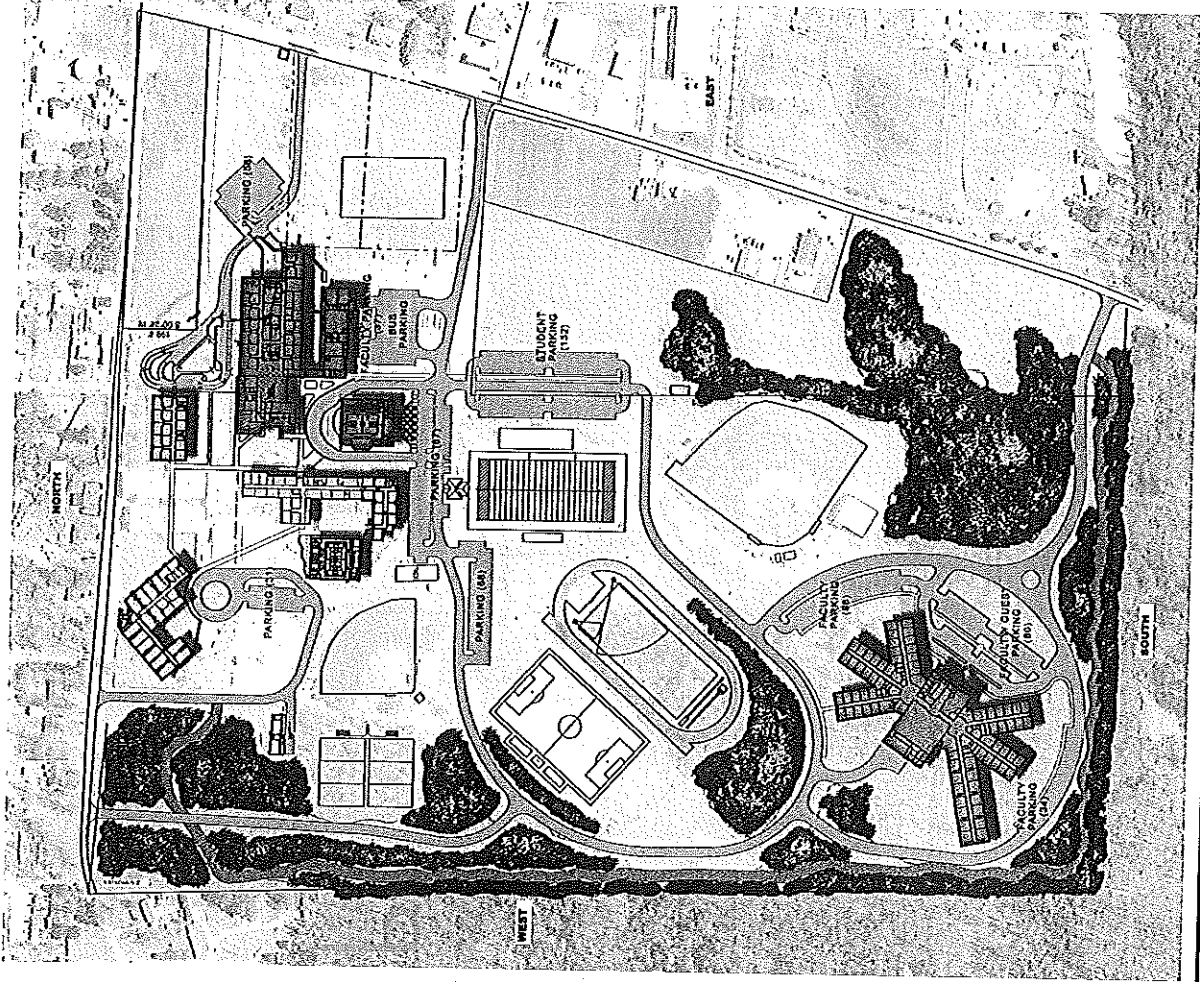
JBHM Notice to Proceed	October 7, 2013
Soils / Survey Notice to Proceed	October 21, 2013
Document Completion	January 5, 2014
Advertise / Bid	January 6 - 30, 2014
Board Approval / Contracts	February 3 - 7, 2014
Contractor Notice to Proceed	February 10, 2014
Substantial Completion (4 ⁶ months)	July 11, 2014
Final Completion	August 1, 2014

JBHM Project #13086.00

Lowndes County School District - November 2013

JBHM
Architecture

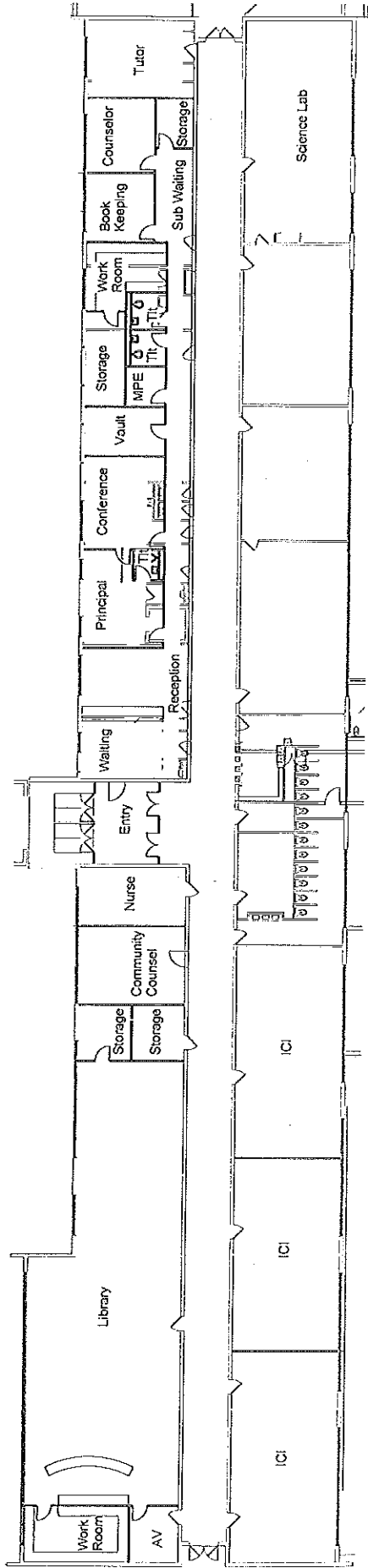
Caledonia Master Plan



Lowndes County School District • October 2013

JBHM
Architecture

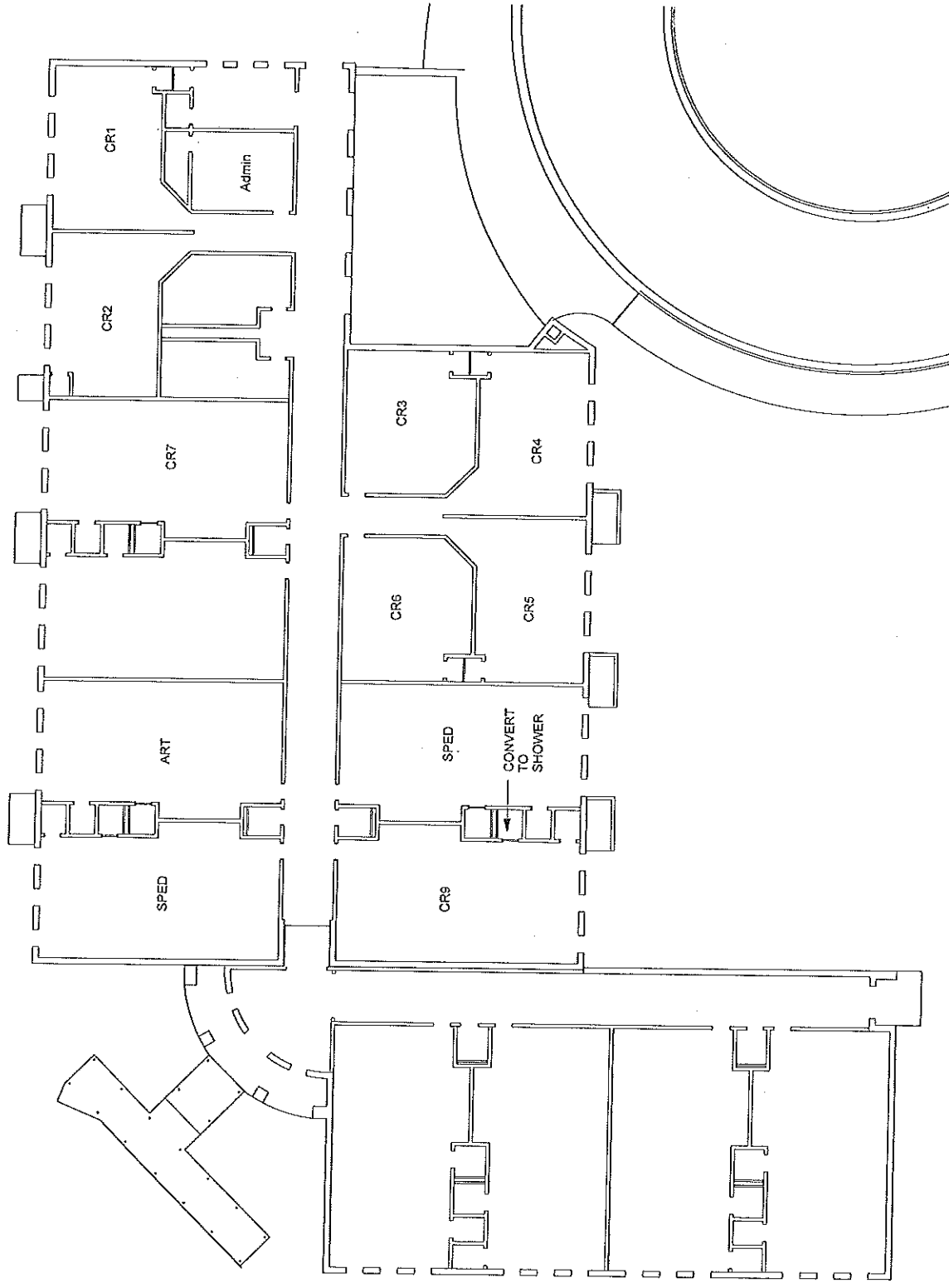
Caledonia Middle School



JBHM
Architecture

Lowndes County School District - October 2013

Caledonia Elementary School, Existing



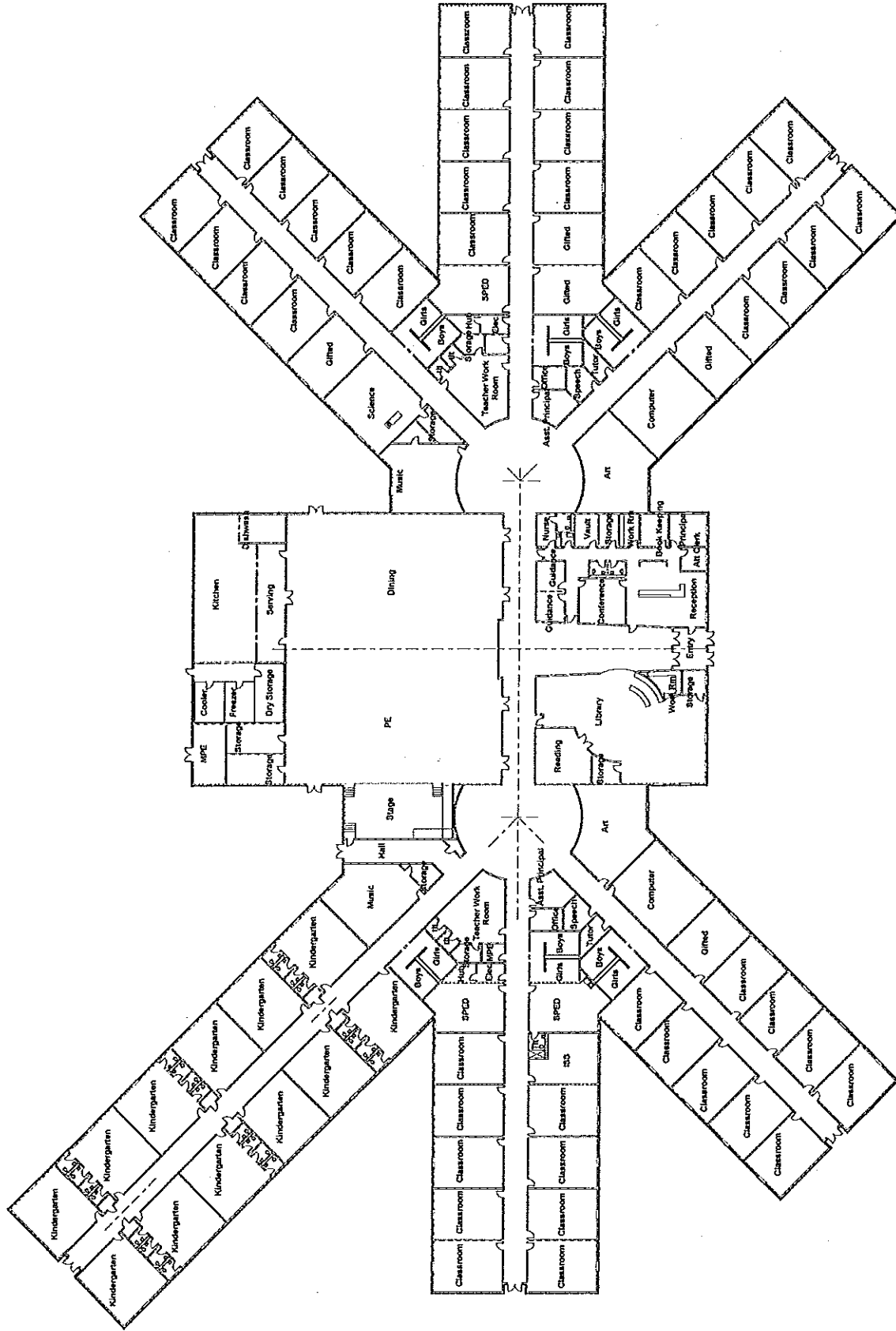
Lowndes County School District • October 2013

JBHM
Architecture

Caledonia New Elementary School, Pre-K-5, Preliminary Program
 Base Facility 1320 Student Capacity, Enrollment 2013 - 1047

Function	Quantity	Size	Subtotal	Total
Typical Classrooms	45	650	29,250	
Pre-K / Kindergarten Classrooms	12	800	9,600	
Special Classroom / Gifted / ISS	9	650	5,850	
Subtotal Classrooms				44,700
Media Center			3,800	
Dining / Kitchen	400		9,400	
Stage			1,200	
PE			5,700	
Administration / Staff / Guidance			4,500	
Music	2	1000	2,000	
Art	2	1000	2,000	
Science	1	1000	1,000	
Computer	2	1000	2,000	
TLT / Storage / Etc			5,500	
Subtotal - Other				37,100
SF Subtotal				81,800
Circulation / Walls (30%)				24,540
SF Total				106,340
Base Facility				111,000

Caledonia Elementary School, New



JBHM
Architecture

Lowndes County School District - October 2013

**Caledonia Elementary School, Master Plan
Preliminary Schedule**

JBHM Notice to Proceed	October 7, 2013
Soils / Survey Notice to Proceed	October 21, 2013
Document Completion	March 31, 2014
Advertise / Bid	April 1 – May 1, 2014
Board Approval / Contracts	May 5 – 9, 2014
Contractor Notice to Proceed	May 19, 2014
Substantial Completion (14 months)	July 3, 2015
Final Completion	July 31, 2015

JBHM Project #13083.00

Lowndes County School District - November 2013

JBHM
Architecture

Funding, Phase I

Projects	Estimate*	Funding Phase I Current Funds Note-Lease / Purchase (No Bond Issue)
District		\$26,000,000 (+/-)
Vocational Land Purchase Only	\$800,000	\$800,000
Caledonia Campus		
New Elementary School (1100 Students)	\$16,000,000	\$16,000,000
Middle School /Campus Master Plan	\$5,500,000	\$5,500,000
New Hope Campus		
Upper Elementary P.E. Facility (25%)	\$1,000,000	\$1,000,000
West Lowndes Campus		
Middle School to High School Transition	\$2,500,000	\$2,500,000
Project Cost * - Construction / Fees / Survey / Soils		\$25,820,000
		\$26M

Caledonia & West Lowndes Campuses, Additions & Renovations, Preliminary Project Estimate
 JBHM #13083.00.11

Caledonia Campus

<u>1. Middle School Renovation</u>	11,400	SF@	\$50	/SF	\$570,000
Demolition	56,800	SF@	\$5	/SF	\$284,000
K-1 Improvements / Changes					\$40,000
Roadway / Parking / Plaza					\$1,700,000
<u>2. Elementary</u>	111,000	SF@	\$150	/SF	\$16,650,000
Shelter	11,300	SF@	\$50	/SF	\$565,000
Kitchen Equipment					\$400,000
					<hr/>

Soft Cost \$20,209,000
 \$1,270,000
 Subtotal \$21,479,000

3. Budget

\$21,500,000

West Lowndes Campus

<u>1. Elementary School</u>	5,100	SF@	\$140	/SF	\$714,000
<u>2. Middle School / High School</u>					
Renovation	31,720	SF@	\$50	/SF	\$1,586,000
Demo Pump House / Storage Building					\$2,300,000
					\$50,000

Soft Cost \$150,000

3. Budget

\$2,500,000
\$2,500,000