

Mississippi State University - Starkville Oktibbeha CSD

6-7th GRADE PARTNERSHIP SCHOOL

PARTNERSHIP SCHOOL QUICK FACTS:

Estimated Enrollment
900 students

Estimated Square Footage
101,700 sqft

*Size of Proposed Donated
Property*
42.8 acres

FINANCIAL REQUIREMENTS:

MSU Foundation
\$5 million

*MSU Donation of Land
Requirements Valued at*
\$5 million

Local Funding Sources
\$10 million

Legislative Request
\$10 million

Setting a New Standard for Educating Mississippi's Students & Future Teachers

*The creation of Starkville-Oktibbeha Consolidated School District in July 2015 will present a unique opportunity for a **groundbreaking partnership**. For the first time in Mississippi, the state's largest university and a local school district will partner to simultaneously educate children at the middle grades and those in the middle of their undergraduate collegiate experiences in a single state-of-the-art facility using some of the future's most innovative classroom experiences and techniques as they are being developed.*

IMPACTING THE CLASSROOM

A Think Tank of Innovative & Expanded Educational Experiences

Picture a place where student achievement is shaped by innovative, **research-based** teaching techniques from conception to implementation, and where teachers work side-by-side with university professors and pre-service novices to formulate best practices that will improve educational outcomes across the state.

- All 6th and 7th grade students in Starkville/Oktibbeha County will attend a new facility on the Mississippi State University campus, housing an estimated 900 students.
- The facility will create an environment where learning is as natural as breathing, walking, and even eating – where students learn something new about the world around them in installations & constructed features no matter where they look, from cafeteria walls to hallway floors to outdoor classrooms.
- Students of the Partnership School will experience integrated “exploratory” and “STEAM” centered learning practices at every level and subject area, forming a unique testing ground for new educational techniques.

IMPACTING THE STATE

Pre-service & In-service Training for Mississippi Teachers

Picture a place where educators from all over the state will convene to plan, learn, share, and embrace learning in the middle...historically the most challenging age group and the toughest transition from grade to grade...all within the sometimes-neglected setting of the rural Deep South.

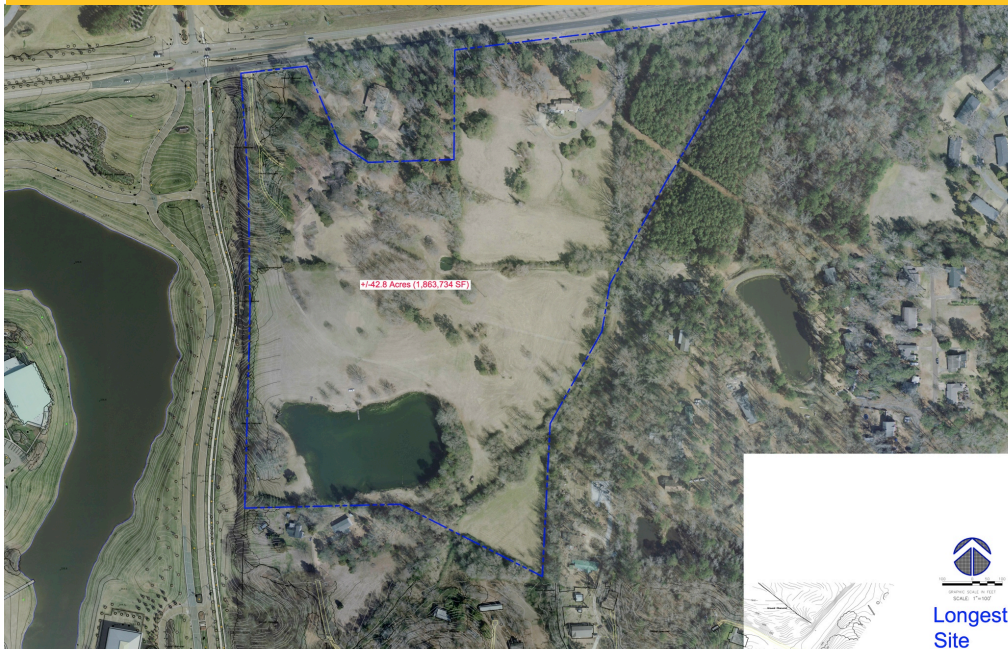
- **Preservice educators** in MSU degree programs will observe and learn innovative practices they can bring to the schools across the state that hire them after graduation.
- **Inservice educators** will have opportunities for exchanges and internships that allow them to learn about curriculum and teaching practices and carry what they learn back to their home districts, impacting students throughout Mississippi.
- Teachers training in the Partnership School will be among the first in Mississippi to experience new and developing **best practices** in rural education.

IMPACTING THE FUTURE

A Rural Education Institute Leading the Southeast

- Mississippi's rural heritage is part of what makes us strong, but it also poses challenges for education, from finding resources to recruiting teachers and beyond.
- Educational research, publications, curricula and programs overwhelmingly focus on urban schools, not addressing the unique issues that rural, especially rural Southern, schools are facing.
- The Partnership School will form the keystone of a **research center** for rural teaching and teacher education – the **only one in the Southeast** and one of only three in the nation.

Mississippi State University - Starkville Oktibbeha CSD 6-7th GRADE PARTNERSHIP SCHOOL



Approved site at intersection of Hwy 182 & George Perry Street

LONGEST SITE PARTNERSHIP SCHOOL Sketch Site Plan



APPROVED MSU SITE

A proposed site for the new **Partnership School and Rural Education Institute** has been identified and approved by the Mississippi State University Master Planning Committee.

The "Longest Site" is located along the Hwy 182 corridor and the existing George Perry Street entrance to the MSU campus. The 42.8-acre site offers optimum benefits for the intersection of campus and community.

- Accessibility to a regional road network
- Accessibility to the Thad Cochran Research and Technology Park
- Easy pedestrian and bike pathways to the center of campus
- Connectivity to campus athletics facilities for future partnerships
- High visibility location, attracting state-wide & regional audiences

PRELIMINARY SITE GOALS

This groundbreaking facility will be the first of its kind in the state that provides an integrated learning environment for children, college students and inservice professionals within the same walls. The Partnership School facility seeks to:

- Integrate facilities and learning environments to reflect an integrated partnership between campus and community
- Create a sustainable design with environmental educational opportunities provided by the building itself
- Foster educational links between the curriculum of the school and University
- Emphasize collaborative learning, transparency and natural light
- Utilize topographical benefits for creating a natural amphitheater, sports seating and outdoor classrooms

A Unique Opportunity Poised for Success

*Mississippi is poised to take an unprecedented step forward in educating our children through an innovative partnership between the state's largest university and a local school district. The effort will create a unique learning environment for children, college students and education professionals with the opportunity to conceive, research, test and implement state-of-the art techniques that will move the needle in educational success for ALL of Mississippi's children. Local, university & private funding are already in place. The only missing piece is Mississippi Legislative support. **WE NEED YOUR HELP to succeed.***